

If you have recently submitted an Auto claim to American Family Insurance, to expedite your claims process, you may submit photos and an estimate (if available) from your shop of choice to help us evaluate and damages to your vehicle. **YOU DO NOT NEED TO OBTAIN AN ESTIMATE** for us to process your claim. In most cases, all you need to do is submit the requested photographs of your vehicle and American Family can evaluate the damages to get your claim paid and processed quickly.

Once your Auto claim has been submitted the best way to quickly process your claim is by utilizing the Customer Photo Submission Form. Once you have submitted the requested photos/estimate your adjuster will walk you through the next steps to expedite this process.

Claim Information: Please Include in Email

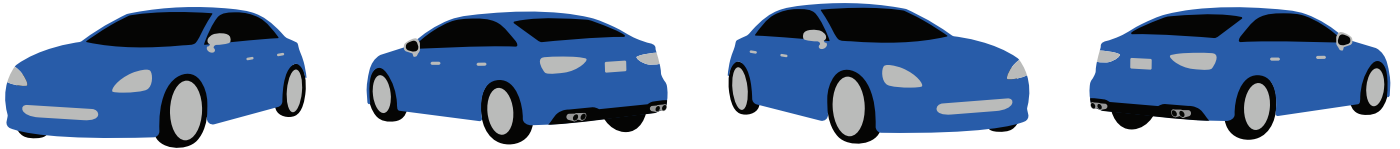
- 1) Claim # as subject line
- 2) Vehicle Owner Name
- 3) Year, Make, Model of Vehicle

Photo Requirements ***Photos must be medium to small resolution***

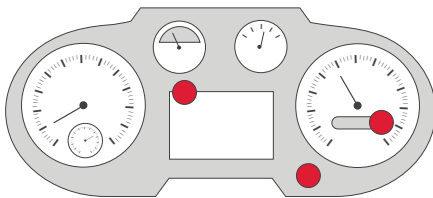
- 1) All Four Corners (Both Sides Visible in Photo): 4 photos
- 2) Mileage: 1 photo
- 3) Clear VIN Number (Driver Door Opening or Dash Plate): 1 photo
- 4) Overview of Damage area: 2-4 photos of Damage

Example Photos:

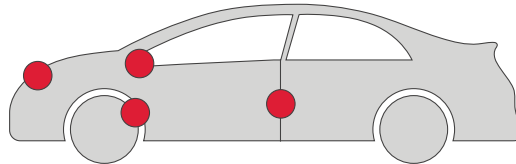
- 1) All Four Corners (Both Sides Visible in Photo) 4 Photos



- 2) Current Mileage: 1 Photo



- 3) VIN Number : 1 Photo



- 4) Overview of Damage Area: 2-4 photos of detailed shots

